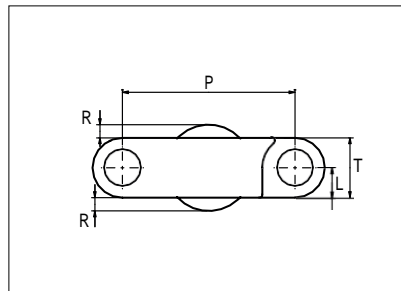
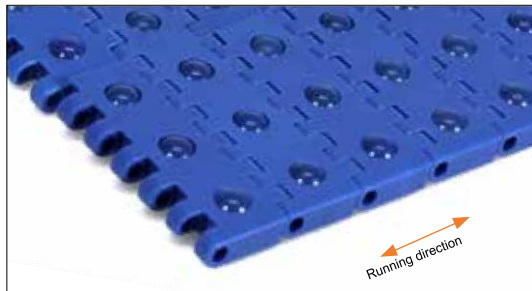


Plastic Modular Belt

 Series **uni QNB** Type **Ball**


Straight running belt
 Nominal pitch: 25.4 mm (1.00 in)
 Surface type: Ball
 Surface opening: Closed
 Backflex radius: 25.0 mm (0.98 in)
 Pin diameter: 5.0 mm (0.20 in)

Belt material & color	POM-SLF B		mm	in		mm	in
Ball material & color	PA6.6 B	P (Nominal)	25.4	1.00	R	1.95	0.08
Pin material & color	PP B	L	4.4	0.17	T	8.8	0.35

Non standard material and color: See uni Material and Color Overview.

Belt width		Permissible tensile force (Belt/pin material)		Belt weight (Belt/pin material)		*Min No drive sprocket per shaft	Number of wear strips (min no)	
		POM-SLF/PP		POM-SLF/PP			**Carry (pcs)	**Return (pcs)
mm	in	N	lbf	Kg/m	lb/ft			
76	3.0	1710	384	0.7	0.48	2	2	2
153	6.0	3443	774	1.4	0.96	2	2	2
229	9.0	5153	1158	2.1	1.43	2	2	2
305	12.0	6863	1543	2.8	1.91	3	3	2
381	15.0	8573	1927	3.5	2.38	3	3	2
457	18.0	10283	2312	4.3	2.86	4	4	2
533	21.0	11993	2696	5.0	3.33	4	4	2
609	24.0	13703	3080	5.7	3.81	5	5	3
685	27.0	15413	3465	6.4	4.28	5	5	3
761	30.0	17123	3849	7.1	4.76	6	6	3
838	33.0	18855	4239	7.8	5.24	6	6	3
914	36.0	20565	4623	8.5	5.71	7	7	4
990	39.0	22275	5007	9.2	6.19	7	7	4
1066	42.0	23985	5392	9.9	6.66	8	8	4

Additional standard belt widths are available in steps of 76.3 mm (3.00 in).

1979	77.9	44528	10010	18.4	12.37	14	14	7
------	------	-------	-------	------	-------	----	----	---


Additional standard belt widths are available in steps of 76.3 mm (3.00 in).

2968	116.9	66780	15012	27.6	18.55	20	20	10
------	-------	-------	-------	------	-------	----	----	----

General belt tolerance is +0/-0.4% at 23°C/73°F and 50% RH. For exact belt width contact Customer Service.

*Max. Load per Drive Sprocket. Belt material: POM-SLF 1840 N (414 lbf).

**Max. Spacing between wear strips, Carry: 152.0 mm (6.00 in); Return: 304.0 mm (12.00 in).

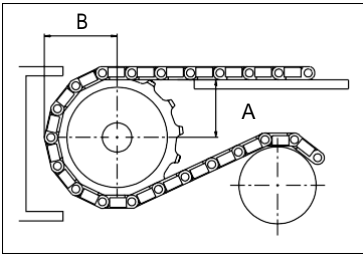
 = Single Link

Sprocket

No. of teeth	Bore size						Overall diameter		Pitch diameter		Hub diameter		Dimension A		Dimension B		Single row/Two way	Machined PA6 N
	Pilot bore	in	1.50	1.57	2.36	2.50												
	mm	38.1	40.0	60.0	63.5	mm	in	mm	in	mm	in	mm	in					
Z15	✓	■	■	■	■	121.5	4.78	122.5	4.82	100.0	3.93	55.4	2.18	66.1	2.60	✓	✓	
Z18	✓	■	■	■	■	146.1	5.75	146.3	5.76	120.0	4.72	67.6	2.66	78.4	3.08	✓	✓	
Z19	✓	■	■	■	■	154.2	6.07	154.3	6.07	125.0	4.92	71.7	2.82	82.5	3.24	✓	✓	

Non standard material and color: See uni Material and Color Overview.

■ Machined sprocket



Other sprocket sizes are available upon request.
 Two-part sprockets are available upon request.
 Other bore sizes are available upon request.
 uni Retainer Rings: See uni Retainer Ring data sheet.
 Width of tooth = 8.0 mm (0.31 in)
 Width of sprocket = 25.0 mm (0.98 in)

Max load per sprocket shown does not take bore size into account.
 Please also ensure that sufficient size shaft is chosen for corresponding load.

For correct sprocket position: See uni Assembly Instructions for uni QNB Ball.
 For more detailed sprocket information, contact Customer Service.

Ammeraal beltech – unichains - copimec