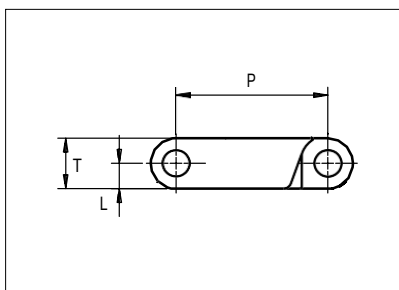
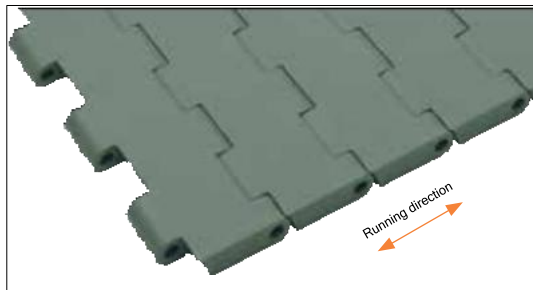




# Plastic Modular Belt

Series **uni SSB** Type **C**



Straight running belt  
 Nominal pitch: 38.1 mm (1.50 in)  
 Surface type: Flat  
 Surface opening: Closed  
 Backflex radius: 45.0 mm (1.8 in)  
 Pin diameter: 6.4 mm (0.25 in)

Belt material & color	POM-LF <b>BR</b>	PP <b>G</b>	mm	in	mm	in	
			P (Nominal)	38.1	1.50	T	12.7w 0.50
Pin and lock material & color	PBT-GR <b>N</b> PP <b>B</b>		L	6.4	0.25	-	-

Non standard material and color: See uni Material and Color Overview.

Alternative pin and lock materials: Pin: PP **W** PA66 **N** SS304

Belt width		Permissible tensile force (Belt/pin material)				Belt weight (Belt/pin material)				*Min. No. drive sprocket per shaft	Number of wear strips (Min. No.)	
		POM-LF/PBT-GR		PP/PBT-GR		POM-LF/PBT-GR		PP/PBT-GR			**Carry (pcs)	**Return (pcs)
mm	in	N	lbf	N	lbf	kg/m	lb/ft	kg/m	lb/ft			
83	3.3	2988	672	1079	243	0.9	0.63	0.6	0.41	2	2	2
115	4.5	4140	931	1495	336	1.3	0.87	0.9	0.57	2	2	2
153	6.0	5513	1239	1991	448	1.7	1.16	1.1	0.76	2	2	2
191	7.5	6876	1546	2483	558	2.2	1.45	1.4	0.95	2	2	2
229	9.0	8244	1853	2977	669	2.6	1.74	1.7	1.14	2	2	2
305	12.0	10980	2468	3965	891	3.4	2.32	2.3	1.52	3	3	2
381	15.0	13716	3083	4953	1113	4.3	2.89	2.8	1.89	3	3	2
457	18.0	16452	3698	5941	1336	5.2	3.47	3.4	2.27	4	4	2
533	21.0	19188	4313	6929	1558	6.0	4.05	3.9	2.65	4	4	2
609	24.0	21924	4929	7917	1780	6.9	4.62	4.5	3.03	5	5	3
685	27.0	24660	5544	8905	2002	7.7	5.20	5.1	3.41	5	5	3
761	30.0	27396	6159	9893	2224	8.6	5.78	5.6	3.78	6	6	3

Additional standard belt widths are available in steps of 76.1 mm (3.00 in). Additional non-standard belt widths are available in steps of 25.4 mm (1.00 in).

1979	77.9	71244	16016	25727	5783	22.4	15.03	14.6	9.84	14	14	7
------	------	-------	-------	-------	------	------	-------	------	------	----	----	---

Additional standard belt widths are available in steps of 76.1 mm (3.00 in). Additional non-standard belt widths are available in steps of 25.4 mm (1.00 in).

2968	116.9	106848	24019	38584	8674	33.5	22.54	22.0	14.76	20	20	10
------	-------	--------	-------	-------	------	------	-------	------	-------	----	----	----

For belt width above 2968 mm, please contact our customer service to review packaging and handling.

General belt tolerance is +0/-0.4% at 23°C/73°F and 50% RH. For exact belt width contact Customer Service. Non standard belt width on request.

\*Max. Load per Drive Sprocket. Belt material: POM-LF 2000 N (450 lbf), PP 1200 N (270 lbf).

\*\*Max. Spacing between wear strips, Carry: 152.0 mm (6.00 in); Return: 304.0 mm (12.00 in).

= Single Link



Distribué par :



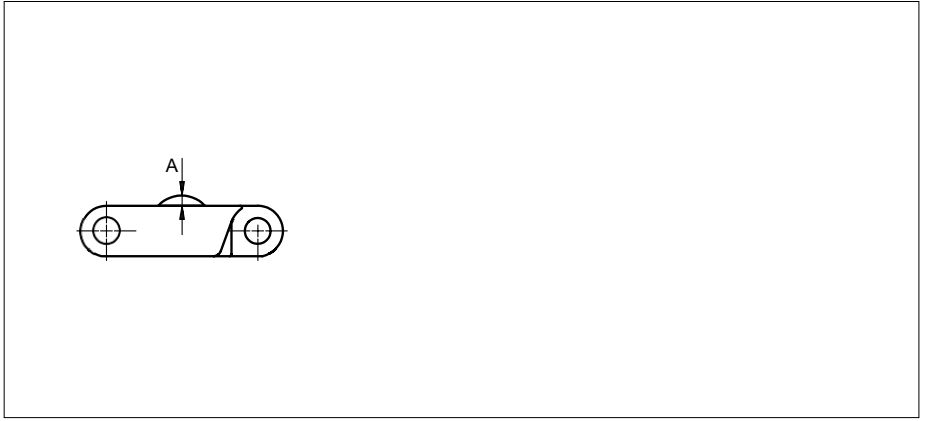
STANDARD

STRAIGHT RUNNING

PITCH 38.1 MM/1.50 IN

**Accessories**

**NON STANDARD – Rubber Top**

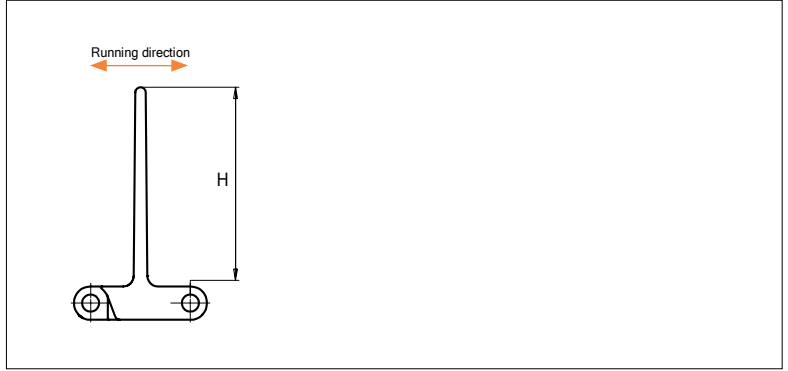
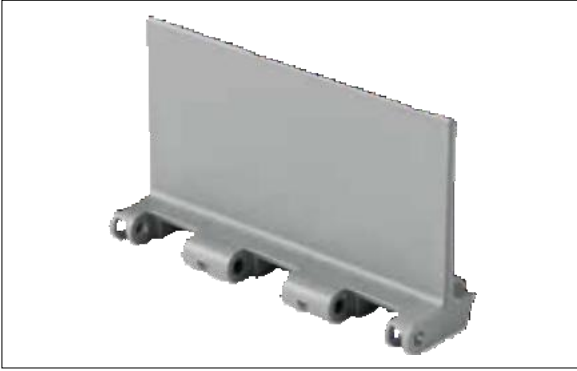


Type	Recommended belt material & color	Recommended rubber material & color	A		Link size	Width	
			mm	in		mm	in
Curved	POM-LF BR	05	2.5	0.10	K600	152.2	5.99

Non Standard material and color: See uni Material and Color Overview.

**Accessories**

**Flight**



Type	Flight Material & color	H		Link size	Width	
		mm	in		mm	in
Flat	PP-I G	76.1	3.00	K600	152.0	5.99

Non Standard material and color: See uni Material and Color Overview.

Minimum bricklaid indent is for uni SSB Product Support 50.8 mm (2.00 in).

Increment: 25.4 mm (1.00 in).

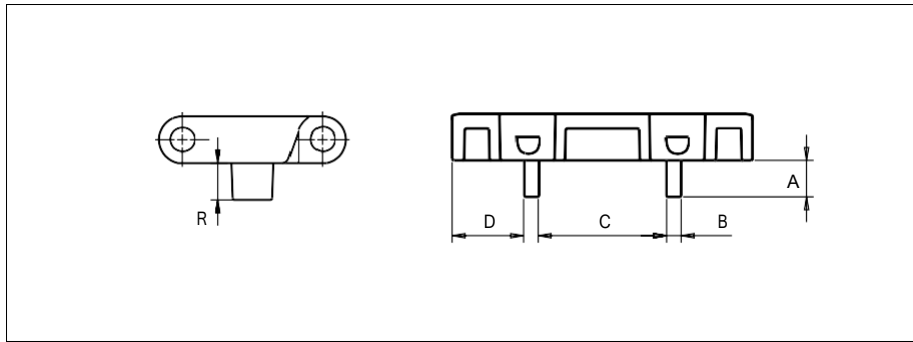
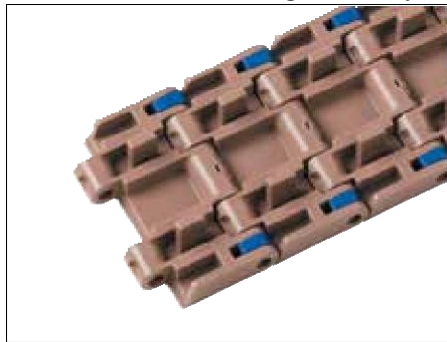


Distribué par :

Comptoir de Pièces Industrielles et Mécaniques

## Accessories

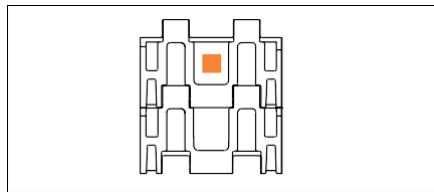
### NON STANDARD – Tab / Single Link Only



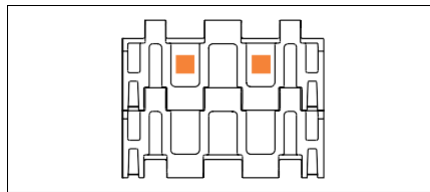
Type	Recommended belt material & color	R		D		C		B		A		Link size	Width	
		mm	in	mm	in	mm	in	mm	in	mm	in		mm	in
Bottom Guide	POM-LF BR	10.0	0.39	19.6	0.77	35.2	1.39	4.0	0.16	10.0	0.39	K325	82.6	3.25

Non Standard material and color: See uni Material and Color Overview.

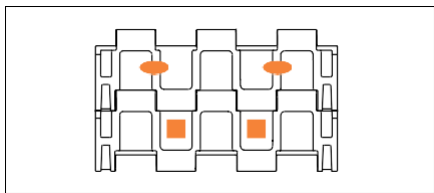
### Overview Sprocket Placement



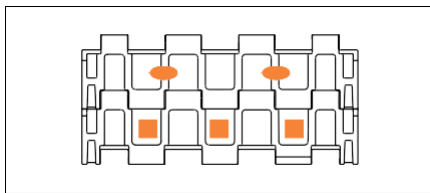
uni SSB K325



uni SSB K450



uni SSB K600



uni SSB K750

- = Single Row sprocket
- = Double Row sprocket



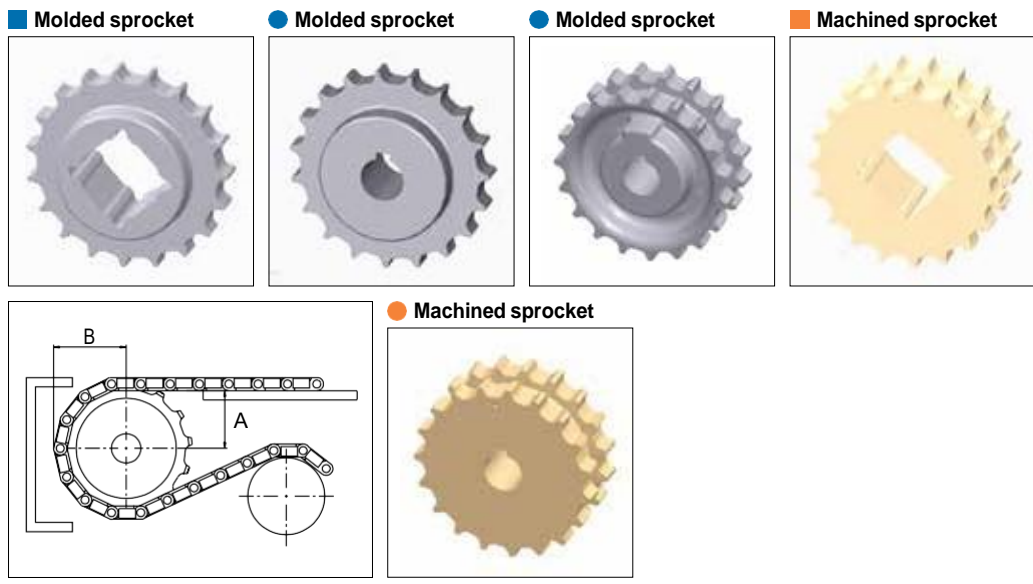
Distribué par :

Comptoir de Pièces Industrielles et Mécaniques

COPIMEC Sarl au Capital de 8.000.000,00 dh / Adresse: N°237, Rue Oued Ziz - Quartier Industriel - Teldi - AGADIR - MAROC  
 TEL : +212 5 28 84 75 61 - +212 5 28 84 75 62 - FAX : +212 5 28 84 73 00 E-mail: [contact@copimec.com](mailto:contact@copimec.com) Web: [www.copimec.com](http://www.copimec.com)

## Sprocket

No. of teeth	Pilot Bore	Bore size											Overall diameter		Pitch diameter		Hub diameter		Dimension A		Dimension B		Single row/Two way	Double row/Two way	Molded PA6	Machined PA6 N		
		in	0.75	0.78	0.98	1.00	1.18	1.25	1.50	1.57	2.36	2.50															3.54	
		mm	19.1	20.0	25.0	25.4	30.0	31.8	38.1	40.0	60.0	63.5	90.0	mm	in	mm	in	mm	in	mm	in	mm					in	
Z19	x					●	●	●	■	●					117.0	4.61	117.3	4.62	75.0	2.95	49.1	1.93	65.0	2.56	x	x	x	
Z21	x					●	●	●	■	●					130.0	5.12	129.3	5.09	75.0	2.95	55.4	2.18	71.0	2.80	x	x	x	
Z23	x					●	●	●	■	●					142.0	5.59	141.2	5.56	75.0	2.95	61.6	2.43	77.0	3.03	x	x	x	
Z25	x						●	●	■	●					155.0	6.10	153.2	6.03	75.0	2.95	67.8	2.67	83.0	3.27	x	x	x	
Z27	x							●	■	●					167.0	6.57	165.2	6.50	75.0	2.95	74.0	2.91	89.0	3.50		x		x
Z29	x							●	■	●					179.0	7.05	177.2	6.98	75.0	2.95	80.2	3.16	95.0	3.74		x		x
Z31	x							●	■	●					192.0	7.56	189.3	7.45	75.0	2.95	86.4	3.40	101.0	3.98		x		x



Non standard material and color: See uni Material and Color Overview.

Other sprocket sizes are available upon request.  
 Two-part sprocket are available upon request.  
 Round bores are always delivered with keyway.  
 Other bore sizes are available upon request.  
 uni Retainer Rings: See uni Retainer Ring data sheet.  
 Width of tooth: 15.0 mm/0.59 in  
 Width of sprocket: Single row = 42.3 mm (1.67 in)  
 Double row = 42.3 mm (1.67 in)

Max. load per sprocket shown does not take bore size into account.  
 Please also ensure that sufficient size shaft is chosen for corresponding load.

For correct sprocket position: See uni Assembly Instructions for uni SSB.  
 For more detailed sprocket information, contact Customer Service.

Ammeraal beltech - unichains - copimec

uni SSB C/170522